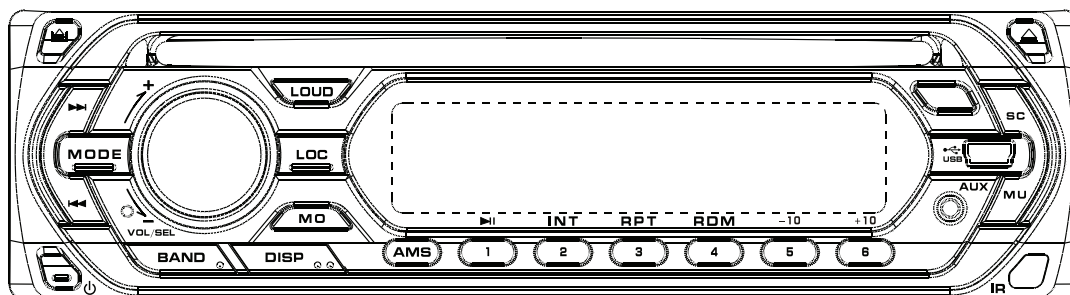


SHUTTLE

Service Manual

SCD-420



CD/MP3/WMA/USB/SD проигрыватель

Руководство по установке и эксплуатации

CONTENTS

Specification..	02
Disassembly Instructions.	03
Operation Check.	04
CD Deck.	05
Alignment and adjustment.	06
Troubleshooting.	08
Printed Circuit Boards.	09
Wiring Diagram.	17
Electrical Parts List.	18
Exploded View.	24
Mechanical Parts List.	27
Schematic Diagrams.	30

SPECIFICATION

General

Power Supply Requirements:	DC 14.4V "===", Negative Ground
Load Impedance:	4 ohms
Maximum Output Power:	25W x 4 (CH)
Chassis Dimensions:	178 x 130x 50mm (W x D x H)
Current Drain:	10A

Tone Controls

Bass (at 100Hz):	+10dB / -10dB
Treble (at 10K):	+10dB / -10dB

CD Player

Signal to Noise Ratio:	More than 60dB
Channel Separation:	More than 60dB
Frequency Response:	20Hz - 20KHz

FM Radio

Frequency Coverage (MHz):	87.5 - 108MHz
IF :	10.7MHz
Sensitivity (S/N-30dB):	12dBu
Stereo Separation:	>30dB

AM Radio

Frequency Coverage (KHz):	522 - 1620KHz
IF :	450KHz
Sensitivity (S/N-20dB):	<42dBu

Remarks:

Specifications subject to change without notice

DISASSEMBLY INSTRUCTIONS

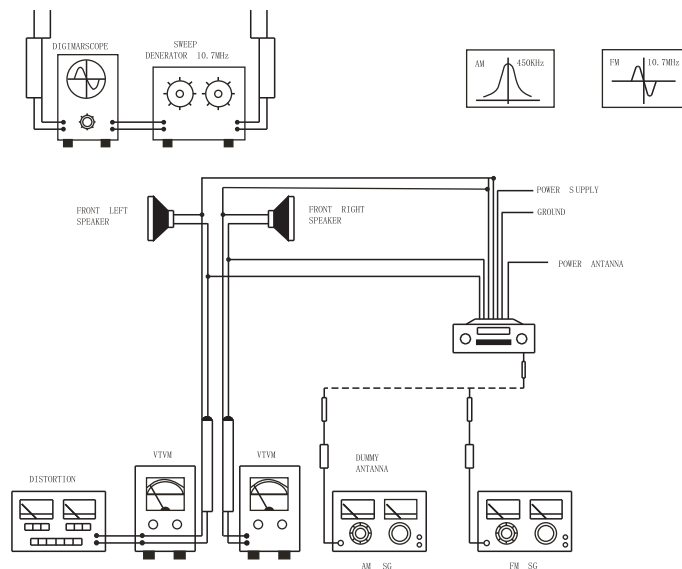
- 1.**Mounting Box:** Slide out the mounting box in parallel.
- 2.**Top cover:** Release screw at the back of top cover, and pull out the cover.
- 3.**Bottom Cover:** Turn over the unit to release the screws at the back of bottom cover and one the top surface. Pull out the cover.
- 4.**Disassemble the Panel:**
Pull out the Front panel.
Release the left side and right side screws attached to with the base.
Pull the base out of the unit.
- 5.**Disassemble the mechanism deck:**
There are two screws to lock the mechanism deck at front ,Unscrew both of them.
Remove the solder from fixed wires on the main, and remove the deck.
- 6.**Disassemble the key board :**
Release four screws .
Remove the back panel .
Then remove the key board.
- 7.Unscrew the left side bracket and the right side bracket. There are two screw on each side.
- 8.**Disassemble the main board :**
- 9.Unscrew two screw at the leef bracket
remove the solder from the Tuner,and main board.
Uncrew two screw ar the ANT.Remove the solder from fixed wires.
Unscrew two crew at the Heatsink.
Remove the main board.

OPERATION CHECK

GENERAL SPECIFICATIONS OF SIGNAL

Standard frequency	AM	1000 KHz (600, 1400 KHz)
	FM	98.0 MHz (90.0, 106.0 MHz)
Signal output	AM	74 dB/uV
	FM	60 dB/uV
Modulation	AM	1 kHz 30%
	FM mono	1 KHz 22.5KHz
AF output level	AM/FM	
Power source voltage	DC 14.4 V (backup voltage is the same as this)	
AF load impedance	4 ohm pure resistance	
Balance	Mechanical center	
Tone	Mechanical center	

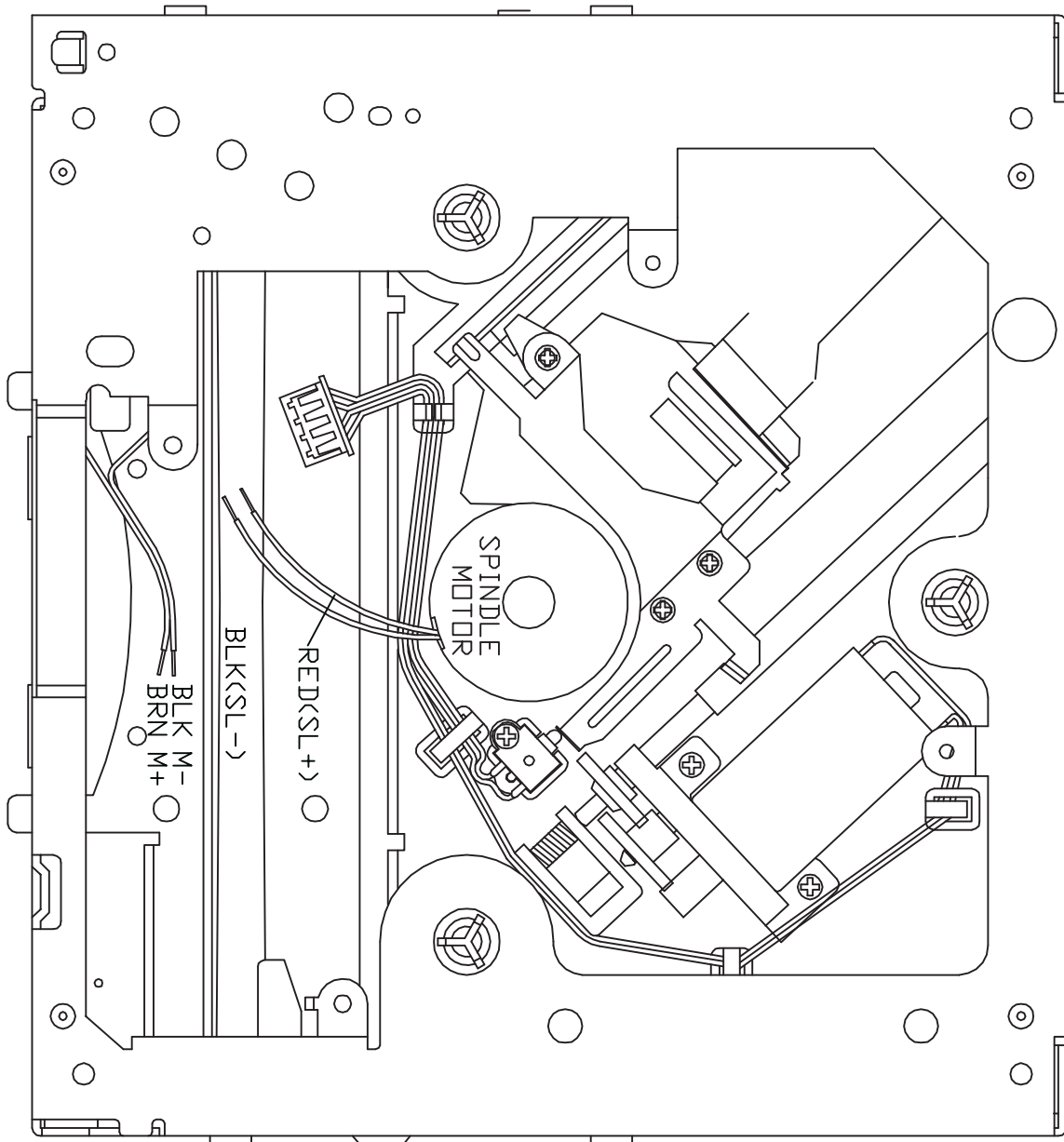
The signal strength read in this section is voltage on the antenna.



Note : Use an RF generator for the AM band and a sweep generator for the FM band.

CD DECK

CD DECK



ADJUSTMENT

FM IF/RF ADJUSTMENT

Equipment Required

FM IF/RF signal generator
Oscilloscope
Solid-state voltmeter (SSVM)
Frequency counter
Regulated DC power supply
DC digital voltmeter
Distortion meter

FM IF and RF Alignment Using FM Signal Generator

Note : Press the radio power switch to turn on the radio. Signal generator output must be kept as low as possible to avoid overload and clipping.

Setup	Generator Coupling	Generator	Display Setting	Indicator Coupling	Adjust ment	Remarks
IF	FM RF signal generator to ANT i/p	10.7 MHz sweep output 60 dB/uV	98.0 Mhz	Connect oscilloscope to Ic1 pin 3 & ground	T1	Adjust so that maximum AF output power and minimum distortion.
RF Low High	Signal generator to antenna receptacle	90MHz Int 1 KHz 22.5KHz mod. output 30dB/uV 106MHz Int 1 KHz 22.5 KHz mod. output 30 dB/uV	90 MHz 106 MHz	SSVM across speaker	C3 L1	Adjust AF output power for maximum

ADJUSTMENT

AF/RF ADJUSTMENT

Equipment Required

- >AF/RF signal generator
- >Oscilloscope
- >Solid-state voltmeter (SSVM)
- >Frequency counter
- >Regulated DC power supply
- >DC digital voltmeter
- >Distortion meter

AM/RF and RF Alignment Using AM Signal Generator

Note : Press the radio power switch to turn on the radio. Signal generator output must be kept as low as possible to avoid overload and clipping.

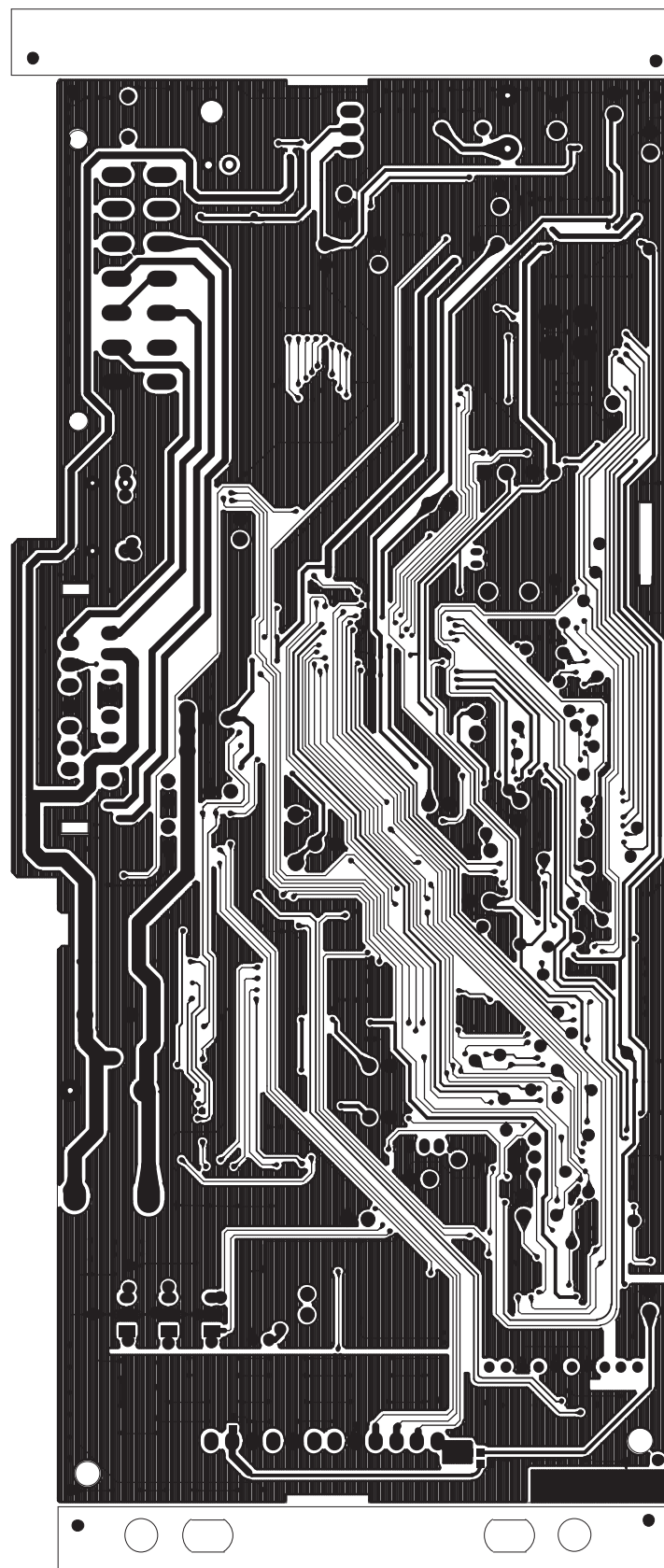
Setup	Generator Coupling	Generator	Display Setting	Indicator Coupling	Adjust ment	Remarks
RF	Signal generator to antenna receptacle	600 KHz Int 1 KHz 30% mod. Output 74 dB/uV	600 Khz	SSVM across speaker	C1	Adjust AF output power for maximum
RF Cont.	Signal generator to antenna receptacle	1400 KHz Int 1 KHz 30% mod. 74 dB/uV	1400 Mhz	SSVM across speaker	L3	Adjust AF output power maximum

TROUBLE SHOOTING

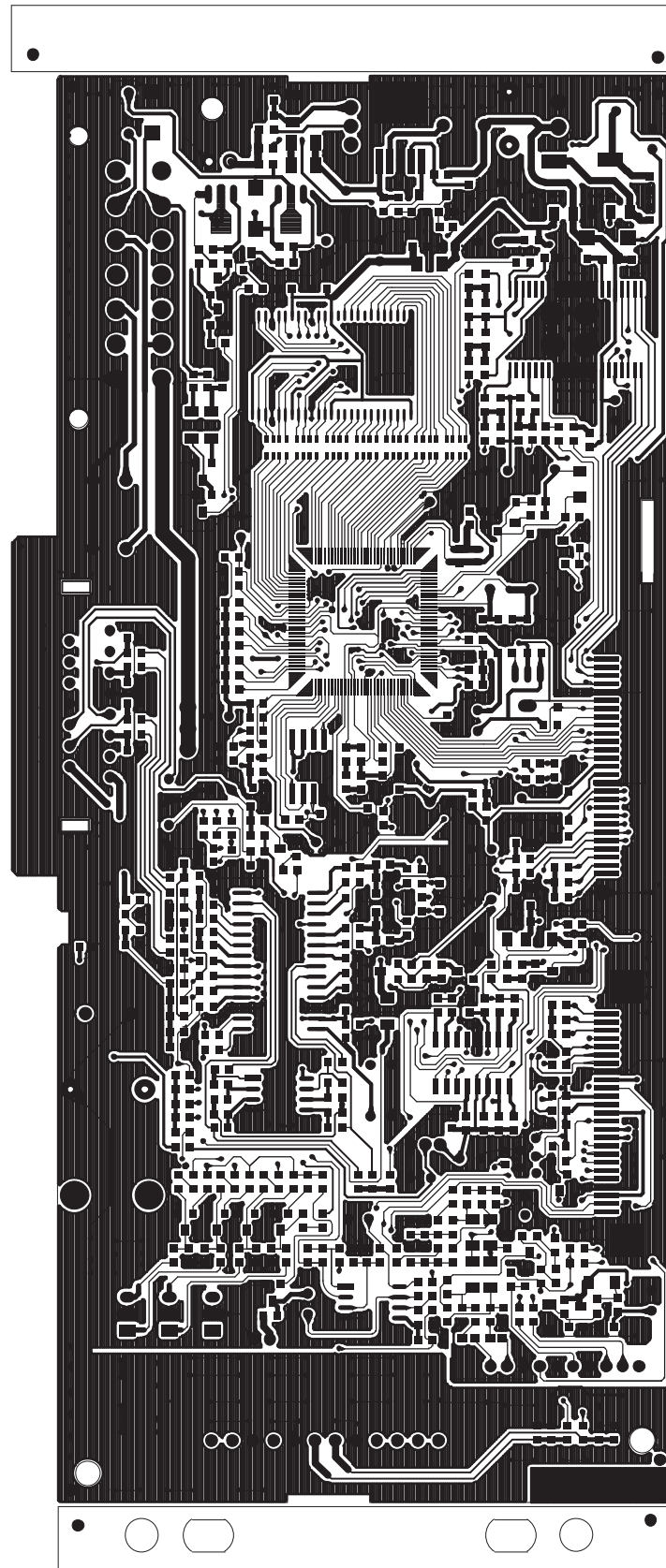
Before going through the check list, check wiring connection.
If any of the problems persist after checklist has been made,
consult your nearest service dealer

Symptom	Causes	Solution
No Power	The car ignition key not been switched on	If the power supply is properly connected to the car accessory terminal, switch the ignition key to ACC
	The fuse is blown	Replace a new fuse
CD Cannot Be Loaded or Ejected	A CD is already inside the player slot	Remove the CD from the player and insert the new one
	Inserting the CD in reverse direction	Insert the CD with the label facing up
	The CD is extremely dirty or defected	Clean the CD or try to play a new one
	Temperature inside the car is too high	Cool off until the ambient temperature return to normal
	Condensation	Leave the player off for an hour or so and try again
No Sound	Volume is at minimum	Adjust volume to desired level
	Wiring is not properly connected	Check wiring connection
Sound Skipping	The installation angle is more than 30 °	Adjust the installation angle to less than 30 °
	CD is extremely dirty or Defected	Clean the CD or try to play a new one
The Operation Keys Do Not Work	The built-in microcomputer is not operating properly due to Interference	Press the RESET button or reinstall the front panel properly
The Radio or Automatic Selection Does Not Work	The antenna cable is not connected correctly	Connect the antenna cable correctly
	The signals are too weak	Select the station manually

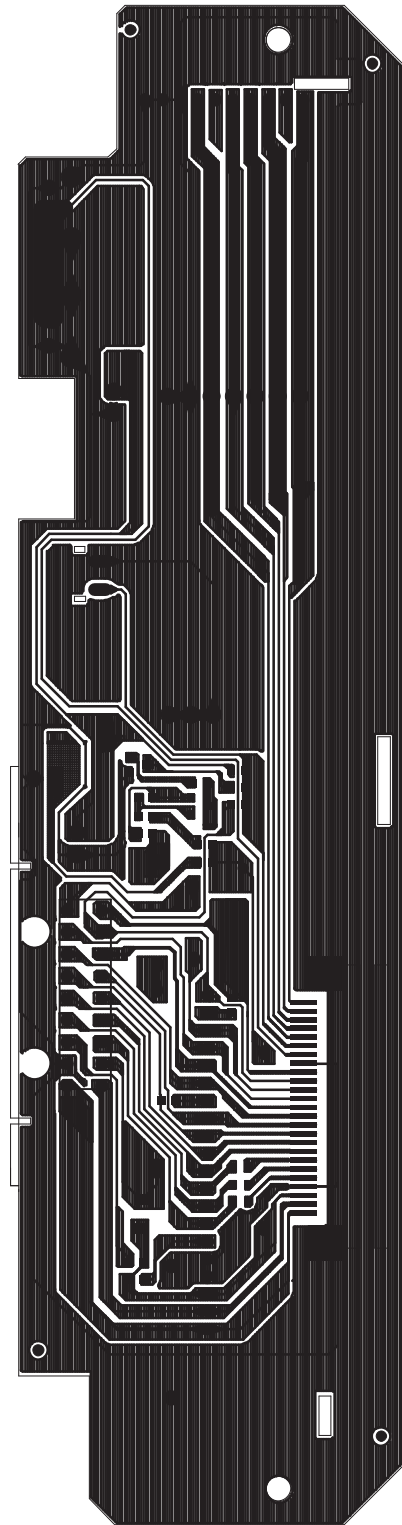
PRINTED CIRCUIT BOARDS



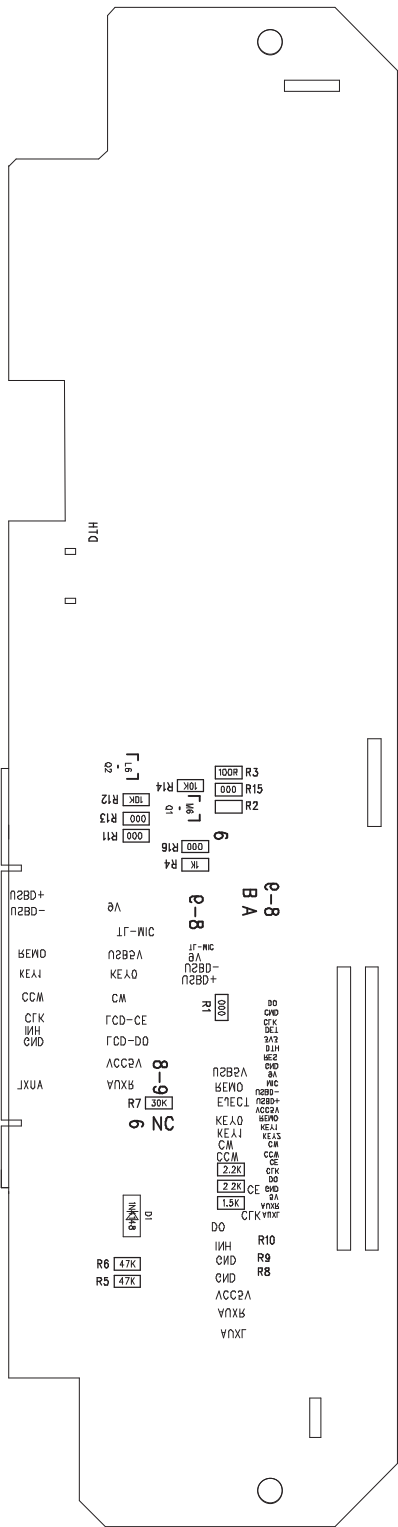
PRINTED CIRCUIT BOARDS



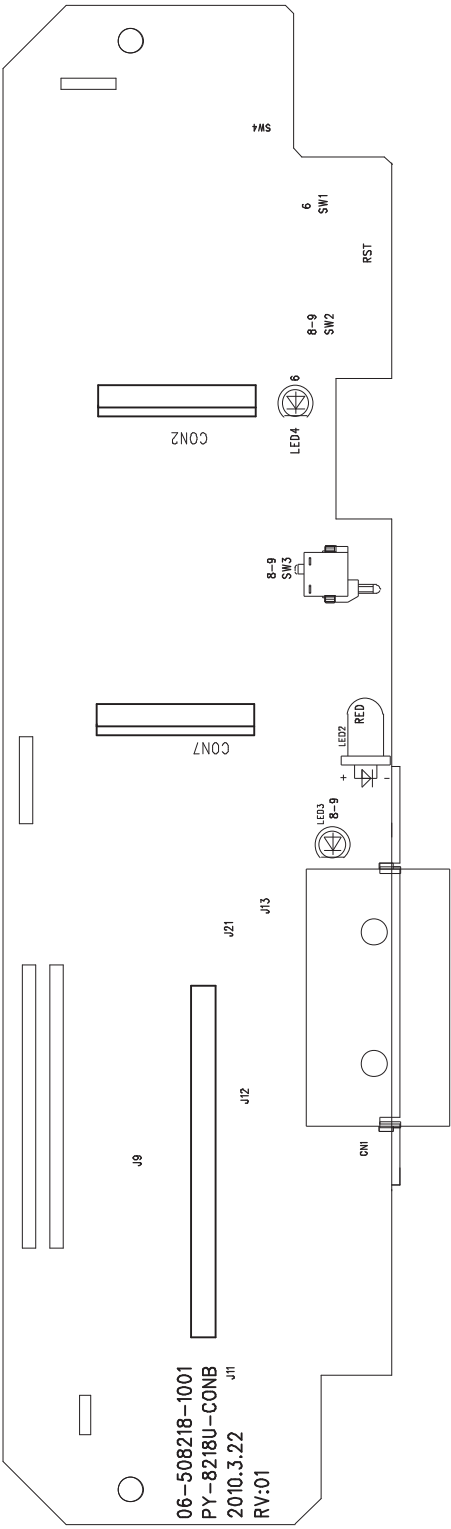
PRINTED CIRCUIT BOARDS



PRINTED CIRCUIT BOARDS

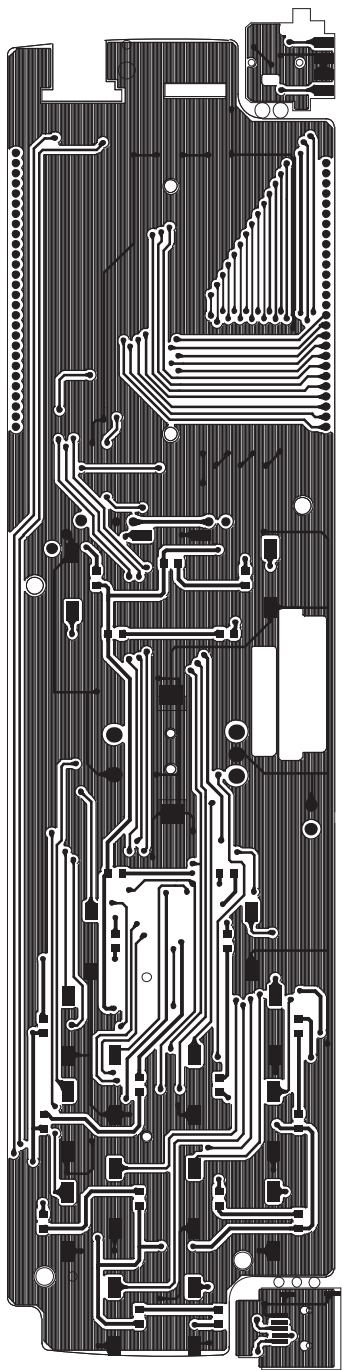


PRINTED CIRCUIT BOARDS

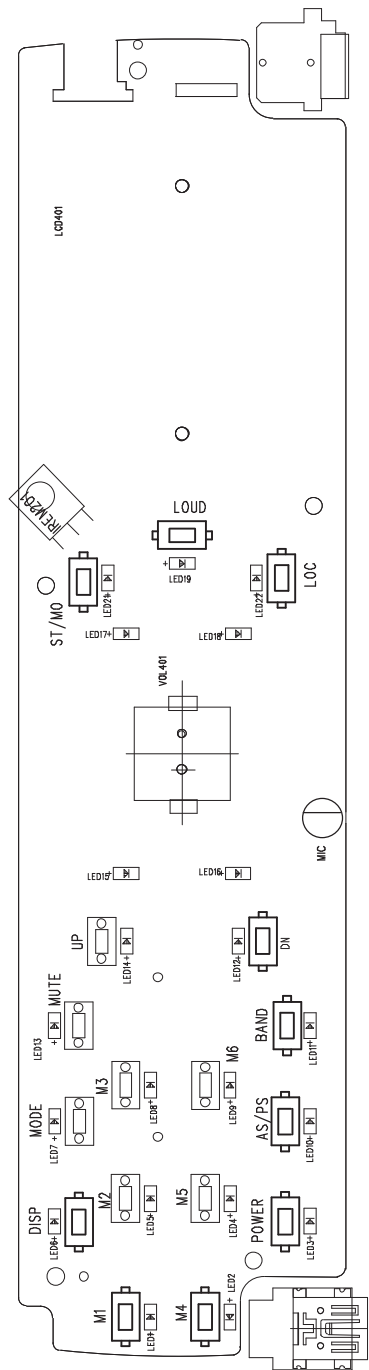


PRINTED CIRCUIT BOARDS

KEY-TOP

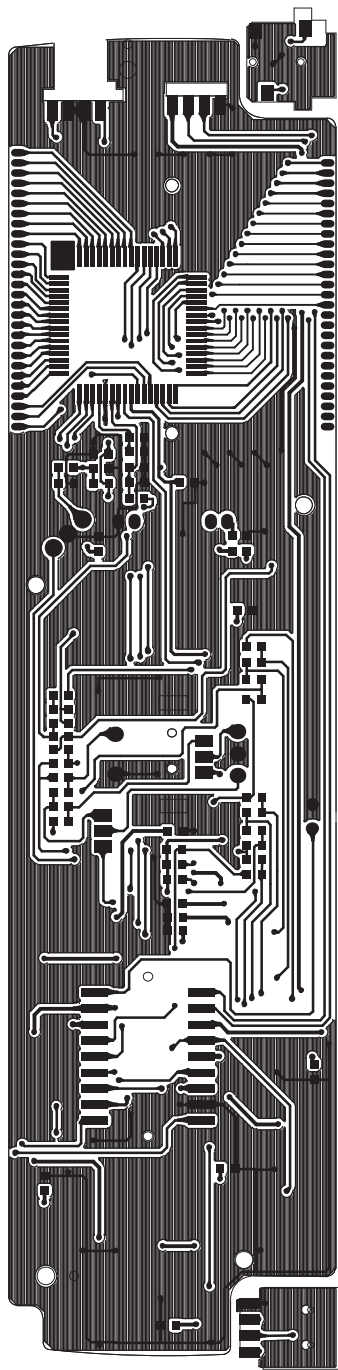


KEY-TOP

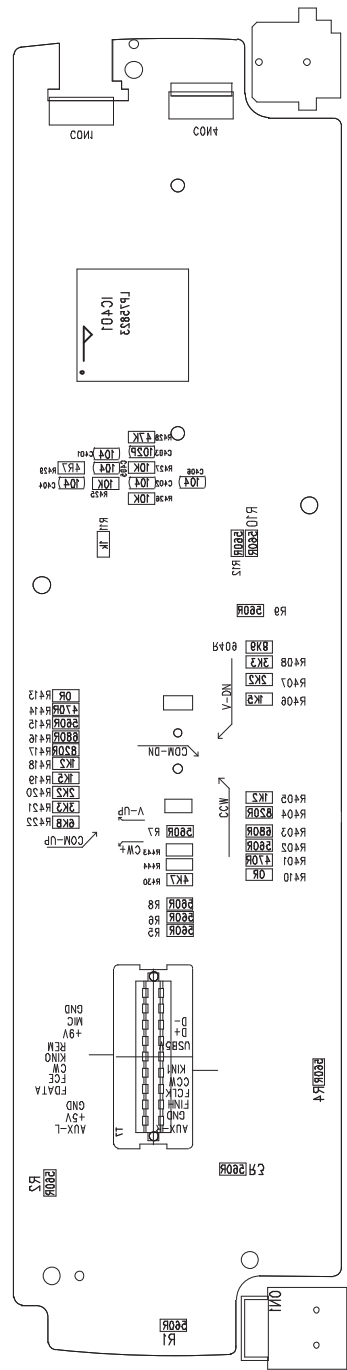


PRINTED CIRCUIT BOARDS

KEY-BOTT

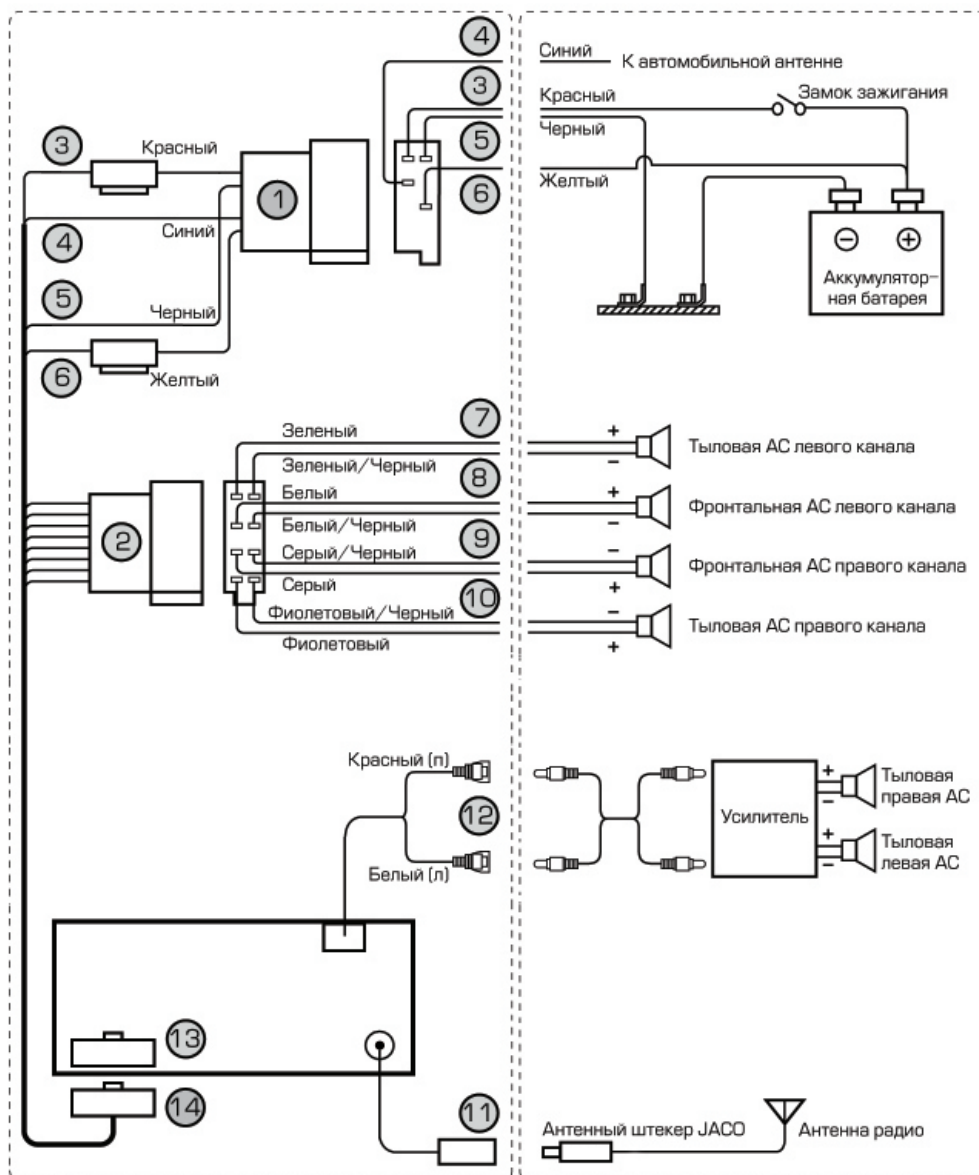


KEY-BOTT



WIRING DIAGRAM

WIRE CONNECTION DIAGRAM



Electical Parts List

06-108218-2001-0W-N	8218MB MP3 (4*25W) 数码IC6621+ISO插座			
04-042334-0100	4. 2336MHZ 插件晶体 30PPM S形			
04-032768-0100	插件 32.768KHZ 圆柱形晶体 3X8MM			
07-113060-0101	热敏电阻 300mA 60V T60-030			
08-210222-1029	电解电容 16V 2200UF ±20% 10*20			
08-210471-1000	电解电容 470UF/16V ±20% φ8*7mm			
10-090435-0201	插件三极管 2SD435 TO-251 40V, 3A, 10W(塑封)			
11-TG7533-0H00	TG7533 TO-92			
11-037388-0600	IC TDA7388			
12-115401-0000	普通二极管 IN5401			
12-115823-0000	插件二极管 IN5823(与IN5822通用)			
16-613103-0001	插件电感 Φ=1.0mm 1mH			
16-214221-6400	扼流圈 220uH/3A, 14X6.6X13mm			
29-603001-0708	高频屏蔽线 50MM			
21-306250-1011	RCA输出线 250MM (灰色)			
33-040340-0001	天线插座 ANT			
34-010114-0706	14P输出线 公插带2个保险丝 (一个1A, 一个10A) (ISO插)			
34-010114-0700	输出线插座 14PIN			
06-108218-2001-1W-N	8218MB MP3 (4*25W) 数码IC6621+ISO插座(外发件)			
06-108218-2001	PY-8218U-MB (7388) 双面板 FR-4 190.*80.2*1.2MM 4*25W(4*40W)			
07-080000-0800	贴片电阻	0	5%	1206 1/4W
07-080151-9900	贴片电阻	150	5%	0603
07-080330-0940	贴片排阻	33R	5%	0603
07-080100-9900	贴片电阻	10	5%	0603
07-080101-9900	贴片电阻	100	5%	0603
07-080102-9900	贴片电阻	1K	5%	0603
07-080103-9900	贴片电阻	10K	5%	0603
07-080104-9900	贴片电阻	100K	5%	0603
07-080105-9900	贴片电阻	1M	5%	0603
07-080152-9900	贴片电阻	1K5	5%	0603
07-080153-9900	贴片电阻	15K	5%	0603
07-080123-9900	贴片电阻	12K	5%	0603
07-080180-9900	贴片电阻	18R	5%	0603
07-080183-9900	贴片电阻	18K	5%	0603
07-080823-9900	贴片电阻	82K	5%	0603
07-080564-9900	贴片电阻	560K	5%	0603
07-080221-9900	贴片电阻	220	5%	0603
07-080222-9900	贴片电阻	2K2	5%	0603

Electical Parts List

07-080223-9900	贴片电阻 22K 5% 0603
07-080224-9900	贴片电阻 220K 5% 0603
07-080270-9900	贴片电阻 27R 5% 0603
07-080332-9900	贴片电阻 3K3 5% 0603
07-080390-9900	贴片电阻 39 5% 0603
07-080392-9900	贴片电阻 3K9 0603 5%
07-080393-9900	贴片电阻 39K 5% 0603
07-080472-9900	贴片电阻 4K7 5% 0603
07-080473-9900	贴片电阻 47K 5% 0603
07-080474-9900	贴片电阻 470K 5% 0603
07-080512-9900	贴片电阻 5K1 5% 0603
07-080562-9900	贴片电阻 5K6 5% 0603
07-080681-9900	贴片电阻 680 5% 0603
07-080682-9900	贴片电阻 6K8 5% 0603
07-080106-9900	贴片电阻 10M 5% 0603
07-080475-9900	贴片电阻 4.7M 5% 0603
08-216100-2022	电解电容 10uF/25V $\pm 20\%$ $\phi 4 \times 5\text{mm}$ 排带2.5MM脚距，平底部伸出
08-216101-1029	电解电容 100UF/16V $\pm 20\%$ $\phi 6.3 \times 5\text{mm}$ 排带2.5MM脚距，平底部伸出
08-216221-0029	电解电容 220UF/10V $\pm 20\%$ $\phi 6.3 \times 5\text{mm}$ 排带2.5MM脚距，平底部伸出
08-216470-1029	电解电容 47UF/16V $\pm 20\%$ $\phi 5 \times 5\text{mm}$ 排带2.5MM脚距，平底部伸出
08-216228-5022	电解电容 2.2UF/50V $\pm 20\%$ $\phi 4 \times 5\text{mm}$ 排带2.5MM脚距，平底部伸出
09-088220-1300	贴片电容 22P/50V 0603 $\pm 5\%$
09-088330-1300	贴片电容 33P/50V 0603 $\pm 5\%$
09-088102-1300	贴片电容 102/50V 0603 $\pm 10\%$
09-088103-1300	贴片电容 103/50V 0603 $\pm 10\%$
09-088104-1300	贴片电容 104/25V 0603 $\pm 10\%$
09-088105-1300	贴片电容 105/16V 0603 $\pm 10\%$
09-088152-1300	贴片电容 152/50V 0603 $\pm 10\%$
09-088224-1300	贴片电容 224/25V 0603 $\pm 10\%$
09-088154-1300	贴片电容 154/50V $\pm 10\%$ 0603

Electical Parts List

09-088225-1300	贴片电容 225 10% 0603 10v
09-088471-1300	贴片电容 470P/50V 0603 $\pm 5\%$
09-088561-1300	贴片电容 560P/50V 0603 $\pm 5\%$
09-088684-1300	贴片电容 684/16V 0603 $\pm 10\%$
10-011015-0125	贴片三极管 2SA1015(SOT-23 8550)
10-011815-0125	贴片三极管 2SC1815(SOT-23 8050)
10-021132-1280	贴片三极管 SOT-89, 2SB1132
11-002309-0H00	TG2309 场效应管 ST-89
11-008035-0500	S5L8035U IC-TQFP128 三星解码
11-009018-0400	MCU-E9018 SOP16 MCU 主芯片
11-004064-0200	SSOP-54 1X16=16M内存
11-005869-0400	IC AM5869S SO-28
11-025T80-0401	FLASH 8M 华邦(8035解码专用) SO-8
11-001507-0401	AP1507-ADJ TO-252-5P
11-321117-0909	IC LD1117 (1.2V) TO-223
11-321117-0900	IC LD1117 (3.3V) TO-223
11-464558-0400	IC KIA4558F
11-007313-0401	四声道输出数字音频控制处理IC 7313
12-114001-0011	贴片二极管 IN4001 SOD-106
12-214148-0011	贴片二极管 IN4148 1206 圆柱形
12-300068-0011	稳压贴片二极管 6V8 1206 圆柱形
12-300091-0021	贴片稳压二极管 9.1V (9.05V~9.20V) 1206
16-AA2000-0000	贴片磁珠 1206 FB320
16-A00000-1003	贴片磁珠 FB 0 Ω 0603
16-0A1188-1000	贴片电感 1.8UH 0603
16-0A1108-0000	贴片电感 1UH 0603
34-010325-0302	25PIN贴片插座 间距1.0MM 上接
34-010327-0300	27PIN贴片插座 间距1.0MM 上接
06-108228-2001-0-N	PY-8228U-TUNE (6621)
04-040003-0100	插件晶体 4.000MHZ 30PPM S型
08-210101-1029	电解电容 16V 100UF $\pm 20\%$ 6.3*5
16-600561-0001	插件色环电感 560uH 0307
19-115121-1201	12PIN 弯针 间距2.5MM
06-108228-2001-1-N	PY-8228U-TUNE (6621) 外发件
06-108228-2001	PY-8228-TUNE 194.4*147.9*1.2MM/16
07-080101-9900	贴片电阻 100 5% 0603
07-080220-9900	贴片电阻 22 5% 0603
07-080820-9900	贴片电阻 82 5% 0603
07-080332-9900	贴片电阻 3K3 5% 0603
07-080472-9900	贴片电阻 4K7 5% 0603
07-080474-9900	贴片电阻 470K 5% 0603

Electical Parts List

09-088180-1300	贴片电容 18/50V 0603 ±5%
09-088100-1300	贴片电容 10P/50V 0603 ±5%
09-088102-1300	贴片电容 102/50V 0603 ±10%
09-088103-1300	贴片电容 103/50V 0603 ±10%
09-088104-1300	贴片电容 104/25V 0603 ±10%
09-088105-1300	贴片电容 105/16V 0603 ±10%
09-088220-1300	贴片电容 22P/50V 0603 ±5%
09-088568-1300	贴片电容 5.6P/50V 0603 ±5%
09-088224-1300	贴片电容 224/25V 0603 ±10%
12-214148-0011	贴片二极管 IN4148 1206 圆柱形
11-006621-0800	TEF 6621 SOT-32
16-0A1188-1000	贴片电感 1.8UH 0603
16-0A1228-1000	贴片电感 220NH 603
16-0A1279-1000	贴片电感 0603 270nH
16-0A1479-1000	贴片电感 0603 470nH
16-000338-0000	贴片电感 3.3UH SMD 1206
06-306138-2803-0D-N	6138U前板部分-18P插座（通用翠绿色）+数码IC
14-506512-0000	按制 直插6*4.3MM
13-118000-2101	VOL 贴片 编码器
17-020304-1002	绿色LED(方形超亮) 3.3V LX-φ2X3X4MM
19-210031-1301	贴片AUX输入座 黑色(6128)
21-511050-0001	USB 线 包装用
28-203790-2701	6128-CD 负片黑膜透光字显示屏(80*21.2*2.8MM)
29-A00000-0001	导电胶 77.8x7.25x2MM
19-121182-1401	18位公插 HT-M18-2.5B
74-020860-0220	遥控接收头 8*6MM(15M/5V)
06-306138-2803-1B-N	6138U前板部分-18P插座（通用翠绿色）+数码IC(外发件)
06-306138-2803	6138U 前板 FR-4 1.2 83.4*184.6/2pcs
07-080000-9900	贴片电阻 0 5% 0603
07-080478-9900	贴片电阻 4R7 5% 0603
07-080471-9900	贴片电阻 470 5% 0603
07-080561-9900	贴片电阻 560 5% 0603
07-080681-9900	贴片电阻 680 5% 0603
07-080821-9900	贴片电阻 820R 5% 0603
07-080122-9900	贴片电阻 1K2 5% 0603
07-080152-9900	贴片电阻 1K5 5% 0603
07-080222-9900	贴片电阻 2K2 5% 0603
07-080332-9900	贴片电阻 3K3 5% 0603
07-080682-9900	贴片电阻 6K8 5% 0603
07-080123-9900	贴片电阻 12K 5% 0603
07-080103-9900	贴片电阻 10K 5% 0603

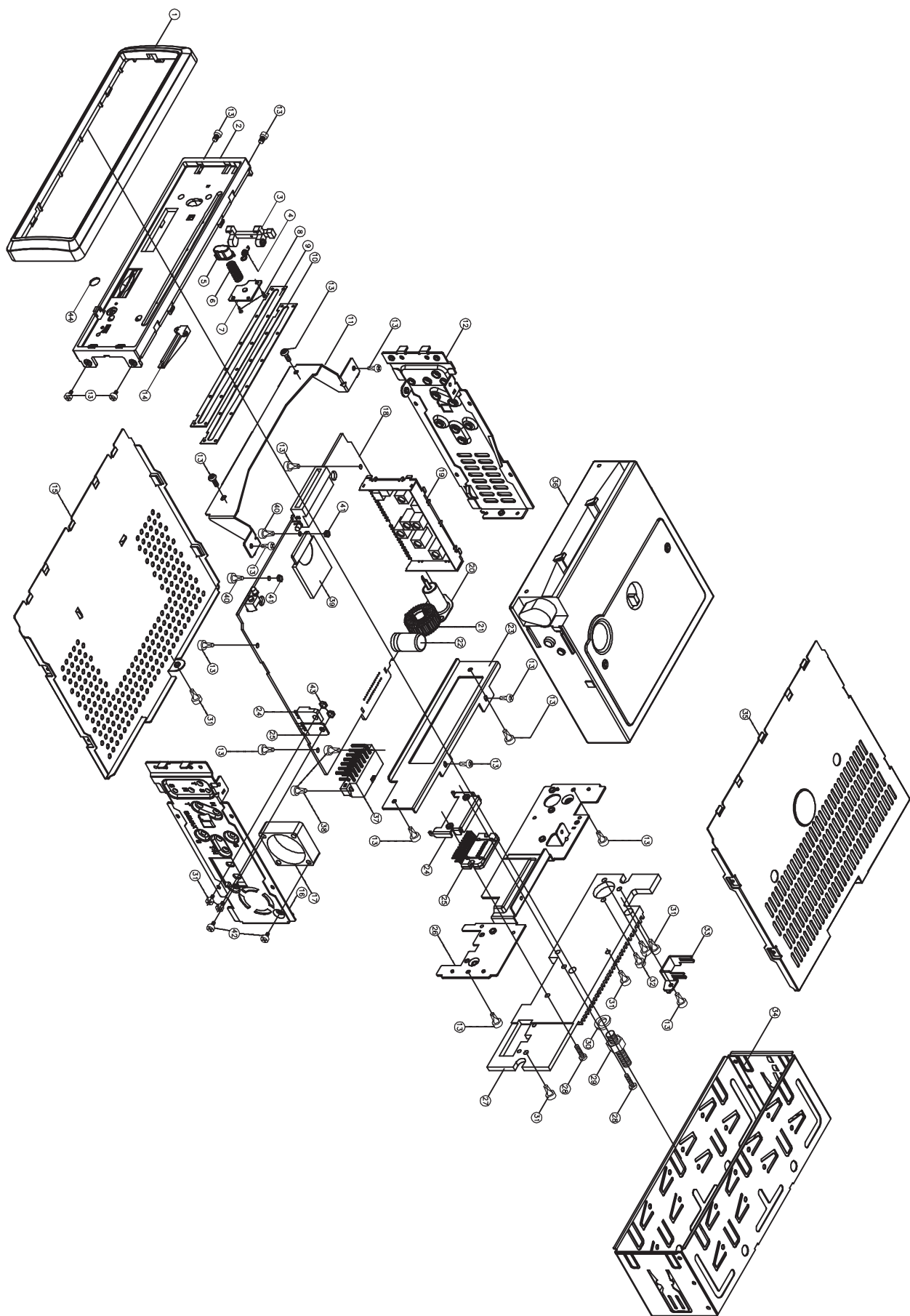
Electical Parts List

07-080473-9900	贴片电阻 47K 5% 0603
07-080331-9900	贴片电阻 330 5% 0603
07-080102-9900	贴片电阻 1K 5% 0603
09-088102-1300	贴片电容 102/50V 0603 $\pm 10\%$
09-088104-1300	贴片电容 104/25V 0603 $\pm 10\%$
11-475823-0500	IC LP75823
11-006523-0500	液晶屏驱动IC SC 6523 (通用)
17-020603-0207	贴片灯3.3V LED 0603绿光
34-020305-0020	USB2.0接口(MINI) (卷带封装)
14-506612-0000	按制 贴片6*4.3MM (卷带封装)
06-708218-1001-0-N	PY-8218U-SB
14-300112-0000	碟到位开关 (兆杰MDS-11D04)
34-020204-0520	4PIN弯针, CD. DECK. 间2.0MM
29-203110-0908	排线 3PIN, 100MM 28#
12-590928-0000	传感器 IR928-6C (6-1)PHOTO
29-727000-1009	27PIN FFC线 PH=1.0MM 双头插 同向 100MM
06-708218-1001-1-N	PY-8218U-SB (外发)
06-708218-1001	PY-8218U-SB 单面板 94V0 117.8*44.9*1.2MM
09-088104-1300	贴片电容 104/25V 0603 $\pm 10\%$
07-080473-9900	贴片电阻 47K 5% 0603
07-080101-9900	贴片电阻 100 5% 0603
07-080221-9900	贴片电阻 220 5% 0603
10-011815-0125	贴片三极管 2SC1815(SOT-23 8050)
34-010317-2032	17P扞座 (上接) 间1.0MM
34-010327-0301	27P扞座 (下接) 间1.0MM
06-508218-1001-0-N	PY-8218-CONB
06-406188-1001	PY-6188U-SD 单面板 T=94V0 1.2 141.3*185.3MM/16pcs
19-010091-1001	SD卡座 SDBMF-009XXBOXZ
14-500512-1500	轻触开关 RESET
17-030303-0101	插件LED灯 (蓝色) 3.0mm
17-010303-1101	LED灯 3 Φ 红发红 普亮 (主机) 主机用
34-010207-0600	插针 7PIN PH=2.54MM 弯脚90度
34-010203-0600	插针 3PIN PH=2.54MM 弯脚90度
29-725001-0559	25PIN FFC线 PH=1.0MM 一面插 一面焊 55MM
19-122182-1401	18位母插 HT-F18-2.5B
06-508218-1001-1-N	PY-8218-CONB (外发) 连接板
06-508218-1001	PY-8218U-CONB 单面板 94V0 189.6*178.2*1.6MM/4PCS
07-080000-9900	贴片电阻 0 5% 0603
07-080101-9900	贴片电阻 100 5% 0603
07-080473-9900	贴片电阻 47K 5% 0603
07-080222-9900	贴片电阻 2K2 5% 0603
07-080331-9900	贴片电阻 330 5% 0603

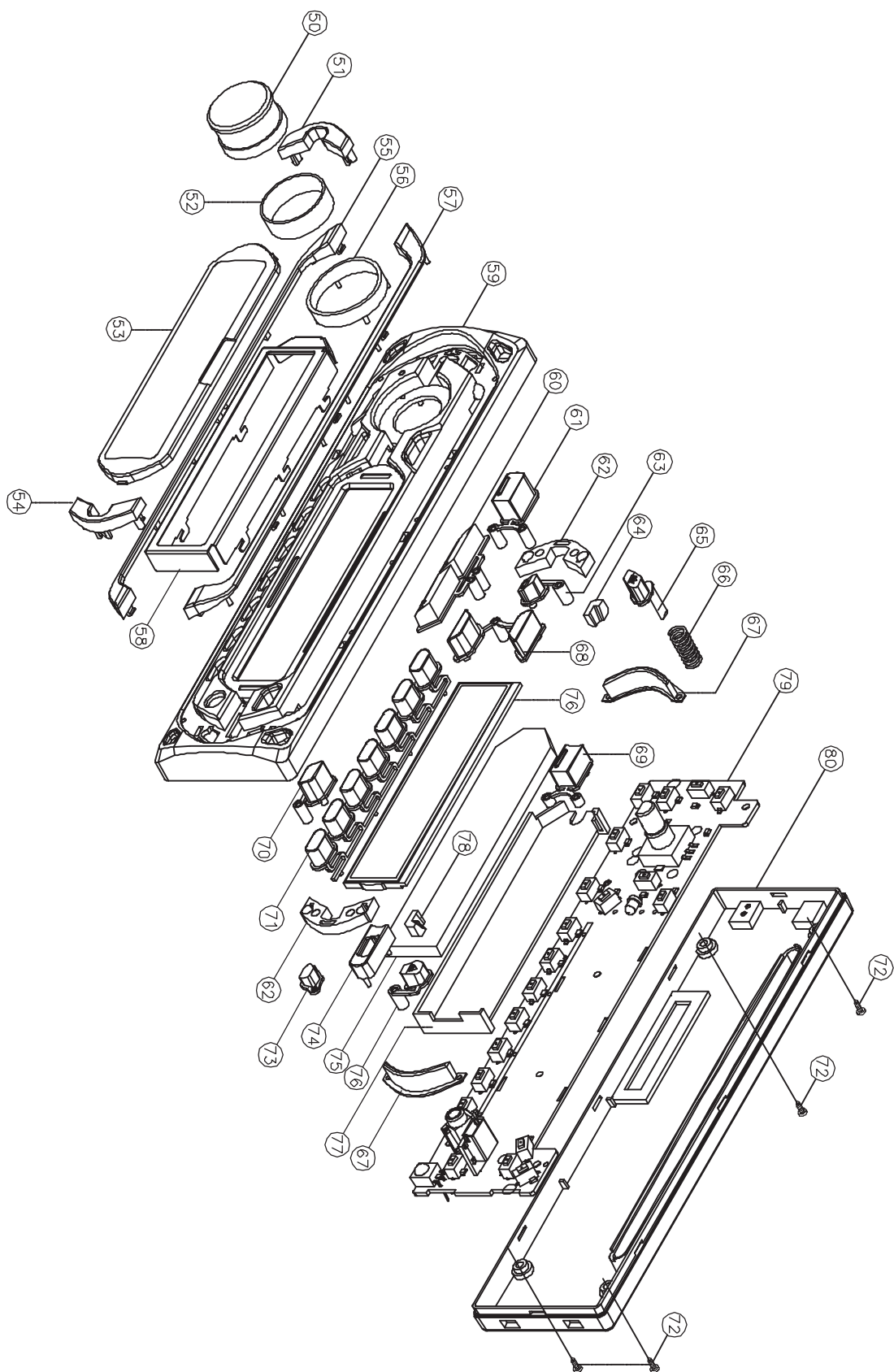
Electical Parts List

07-080152-9900	贴片电阻 1K5 5% 0603
74-822801-1005	CD MP3遥控 SHUTTLE
75-020000-1700	SHINNY CD机芯

EXPLODED DRAWING



EXPLODED DRAWING



EXPLODED DRAWING INSTRUCTION

80	40-036118-0000	BOTTOM	ABS	1	31	59-012103-3008	SCREW		6
79		KNOB PCB		1	30	46-051309-0400	SPRING WASHER		1
78	41-686138-0000	RIGHT DOOR REFLECTOR	ACRYLIC	1	29	59-085403-5021	SCREW		1
77	41-726128-0000	LCD BRACKET	PC	1	28	59-012103-3013	SCREW		2
76	41-046138-0000	EJECT KNOB	ABS	1	27	43-611801-0001	HEAT SINT		1
75	41-716128-0000	LCD REFLECTOR	PC	1	26	43-086118-0110	BACK BRACKET		1
74	41-326138-0000	USB COVER	ABS	1	25		IC7384		1
73	41-696138-0000	REMOTE COVER	ABS	1	24	44-058128-0100	IC7384 BRACKET		1
72	59-022301-2010	SCREW		4	23	44-026118-0100	REAR DEACK		1
71	41-106138-0000	NUMBER KNOB	ABS	1	22		CAP		1
70	41-116138-0000	EQ KNOB	ABS	1	21		TRANSFORM		1
69	41-076138-0000	LOC KNOB	ABS	1	20		ANT		1
68	41-086138-0000	LOUD/MO KNOB	ABS	1	19		TUNNER		1
67	41-666138-0000	REFLECTOR	ACRYLIC	2	18		MAIN PCB		1
66	45-010036-0300	SPRING		1	17		FAN		0
65	41-036138-0000	OPEN KNOB	ABS	1	16	43-076118-0110	RIGHT SIDE		1
64	41-676138-0000	LEFT DOOR REFLECTOR	ACRYLIC	1	15	43-026118-0110	BOTTOM COVER		1
63	41-056138-0000	POWER KNOB	ABS	1	14	41-686118-0000	CD CARD REFELECTOR		1
62	70-006138-1350	SPONGE		2	13	59-012103-2604	SCREW		18
61	41-066138-0000	MODE KNOB	ABS	1	12	43-066118-0110	LEFT BRACKET		1
60	41-096138-0000	BAND/DISP KNOB	ABS	1	11	44-016118-0100	FRONT BRACKET		1
59	40-026138-0000	PANEL	ABS	1	10	48-036118-0500	PC SHEET DOOR		1
58	44-066128-0000	LCD BRACKET	SECC	1	9	71-112812-0001	CD WINDOW DOOR		1
57	41-356168-0000	TOP DEFORMATION	ABS	1	8	59-022301-2006	SCREW		2
56	41-316138-0000	DEFORATION CIRCLE		1	7	44-066118-0100	PUSH BLOSK SHEET	SECC	1
55	41-356138-0000	DOWN DEFORMATION	ABS	1	6	45-025400-0300	PUSH BLOSK SPRING		1
54	41-026138-0000	SCN/MU KNOB	ABS	1	5	41-796118-0000	PUSH BLOSK	ABS	1
53	47-016138-0000	LENS	ACRYLIC	1	4	45-405040-0300	LOCK SPRING		1
52	56-194178-0063	RUBBER CIRCLE		1	3	41-786118-0000	LOCK	ABS	1
51	41-016138-0000	FF/REW KNOB	ABS	1	2	40-016118-0001	BASE	ABS	1
50	41-616138-0000	VOLUME KNOB	ABS	1	1	40-046118-0002	TRIM PLATE	ABS	1
NO.	PART NUBER	DESCRIPTION	MATERIAL	QTY	NO.	PART NUBER	DESCRIPTION	MATERIAL	QTY
44	48-036118-0100	PC SHEET							1
43	59-065103-3025	NUT							2
42	59-012103-3014	SCREW							0
41	59-065103-2020	NUT							2
40	59-022101-2005	SCREW							2
39		SD CARD							1
38	59-022303-2608	SCREW							2
37		SOCKET							1
36		DECK							1
35	43-016118-0110	TOP COVER							1
34	43-088118-0110	SHORT SLEEVE							1
33	44-036118-0101	LINE CLIP							1
32	59-012103-3004	SCREW							2

Mechanical Parts List

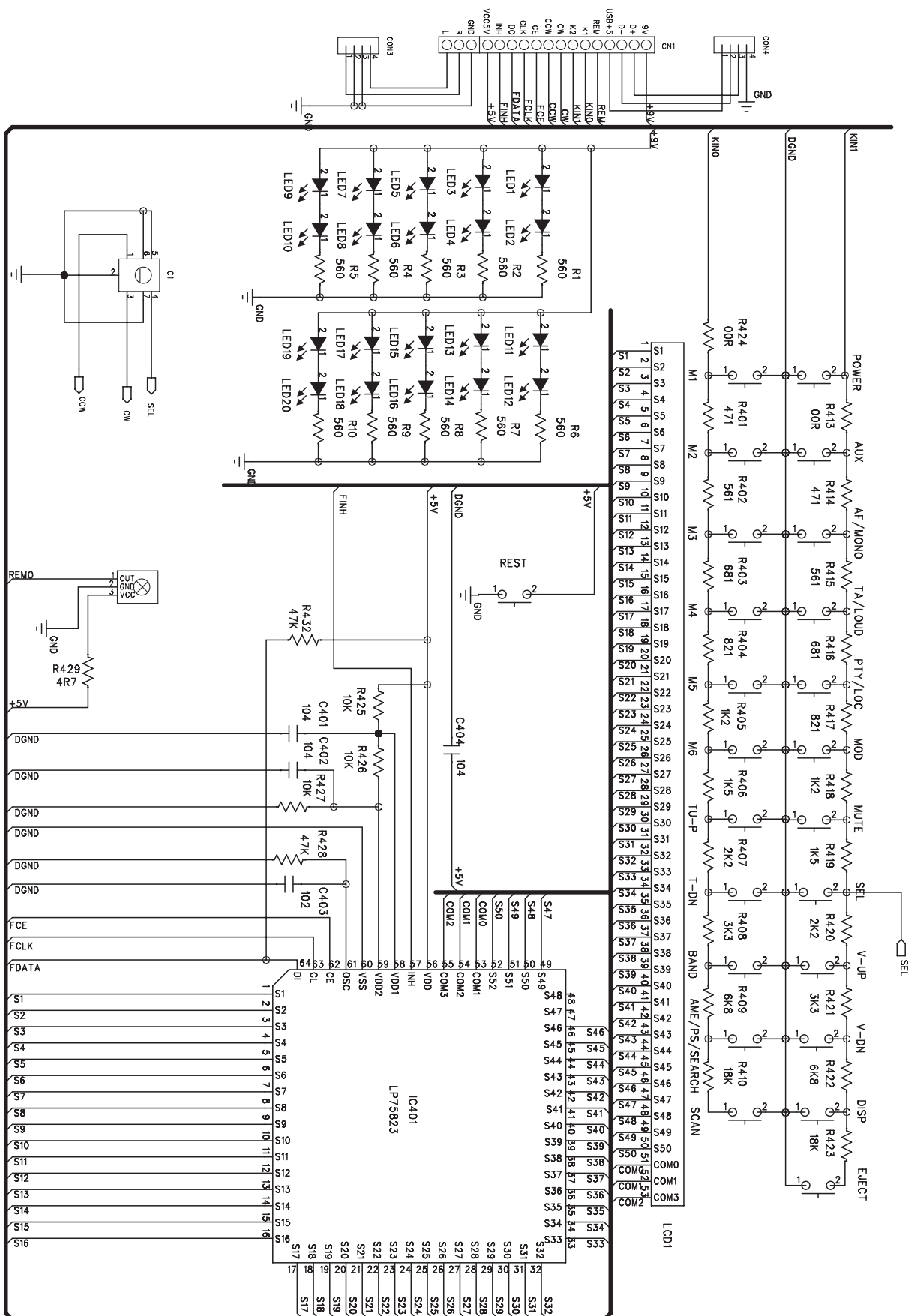
90-D6138U-0106	PY-D6138U 主结构料 B3-2010-38C
40-046118-0002	装饰框, ABS 777D/BLACK, 喷亚黑油
40-216118-0001	基座(有SD卡, 18PIN), ABS 777D, 丝印银字
41-686128-0001	SD卡透光架(有SD卡时用) 喷透明白油
41-786118-0000	锁扣, ABS 777D/黑色
41-796118-0000	推杆, ABS 777D/黑色
43-016118-0110	面盖0.6MM G. S. S
43-026118-0110	底盖 0.6MM G. S. S
43-066118-0111	左侧架 1.0MM G. S. S(新方案, 半截主板)
43-076118-0110	右侧架 1.0MM G. S. S
43-086118-0110	后侧架A(4X25W, 14PIN) 1.0MM G. S. S
43-611801-0003	散热片, (4*25W 14PIN用) 铸铝
44-016118-0100	机芯前支架 1.0MM G. S. S.
44-026118-0100	机芯后支架 1.0MM G. S. S.
44-038118-0100	RCA线夹 1.0MM G. S. S
44-058138-0100	7384 IC支架 1.0MM G. S. S, 可插入PCB板
44-066118-0100	推杆压片 0.8MM G. S. S.
45-025400-0300	顶出弹簧 $\phi 0.35$
45-405040-0300	锁扣弹簧 $\phi 0.30$
48-036118-0500	CD碟口绒布压片(PVC, 0.5t, 透明)
56-147173-0004	主板快巴纸
59-012103-2004	机牙大盘头平尾螺丝M2x4BZb, 白色
59-012103-2604	机牙大盘头平尾螺丝M2.6x4BZb, 白色
59-012103-3008	机牙大盘头平尾螺丝M3x8BZb, 白色
59-012106-3004	M3*4BZb 白色 大盘头三角尾自攻加硬
59-022103-3013	SCREW M3x13PMNi(+)小圆头 镀叻
59-022301-2005	自攻主板固定螺丝2.0X5 黑色
69-048118-2000	机芯垫 EVA $\phi 12*2$ 黑色EVA 硬度30 单面EVA
71-016118-0000	防尘网
71-112812-0001	CD碟口绒布
90-D6138U-0206	PY-D6138U 前咀结构料 B3-2010-38C
40-026138-0003	面壳, 表面喷黑油, 丝印银字“AUX, IR”但不丝印POWR字符
40-136118-0001	底壳, ABS 777D/黑色, 喷黑油(18PIN)
41-016138-1001	巡迹钮, 先喷半透明白油再喷黑油再镭雕
41-026138-1001	SCN/MU钮, 先喷半透明白油, 喷黑油再镭雕
41-036138-0001	OPEN钮, 喷黑油
41-046138-0002	出碟钮, 表面喷半透明白油再喷黑油再镭雕
41-056138-0002	PWR钮, 先喷白油再喷黑油光刻
41-066138-0001	MODE钮, 先喷半透明白油, 再喷黑油, 光刻
41-076138-0001	LOC钮, 先喷半透明白油, 再喷黑油, 光刻
41-086138-0001	LOUD/MO钮, 先喷半透明白油, 再喷黑油, 光刻
41-096138-0001	BAND/DISP钮, 先喷半透明白油, 再喷黑油, 光刻

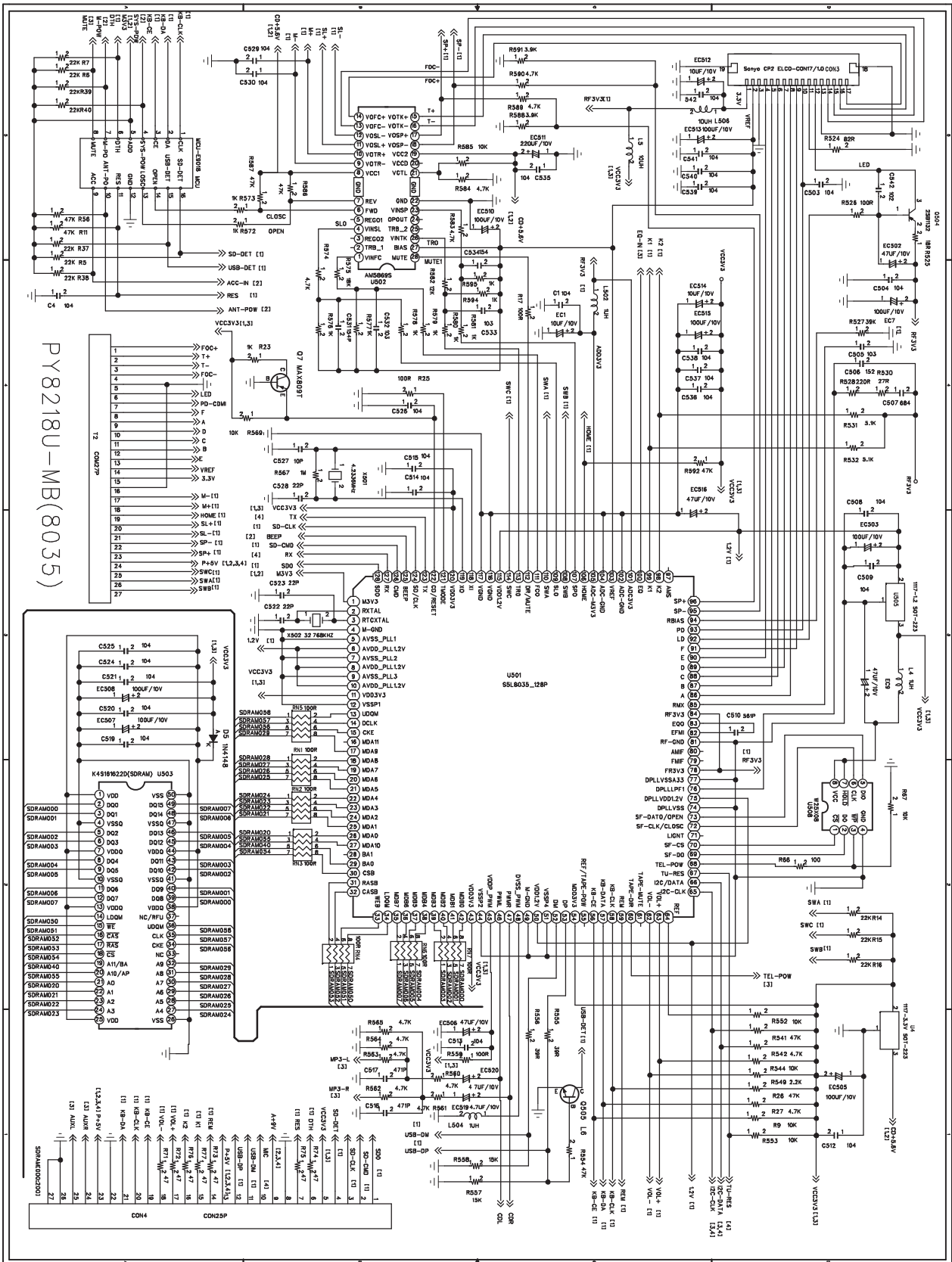
Mechanical Parts List

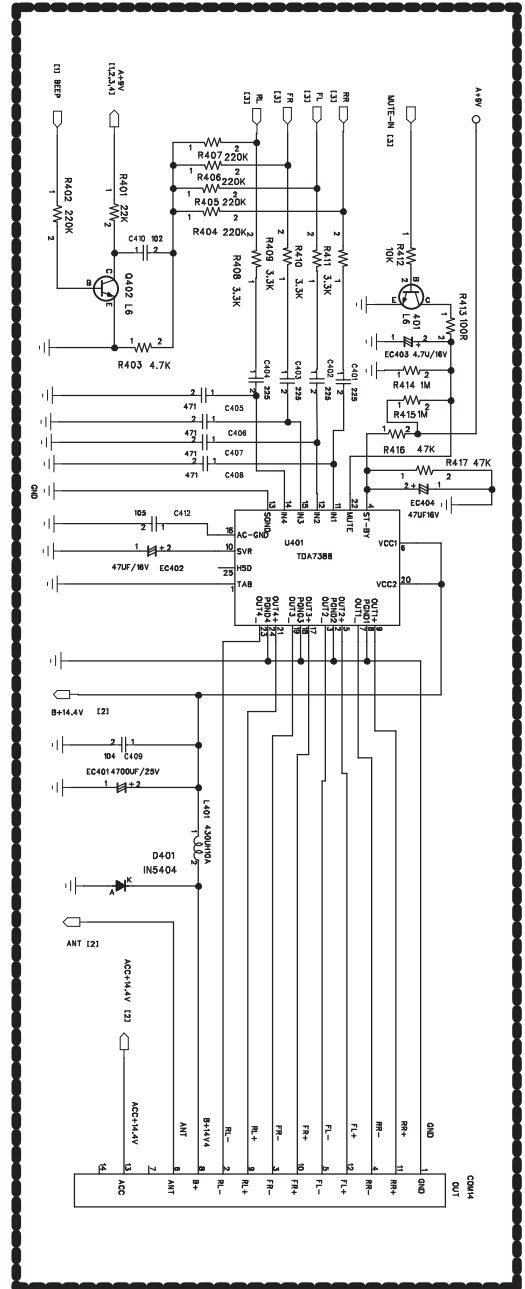
41-106138-0001	数字钮，先喷半透明白油，再喷黑油，光刻
41-116138-0002	EQ钮，喷黑油
41-316138-0001	音量钮装饰块，电镀光铬
41-326138-0001	USB盖，喷黑油丝印银字
41-346138-1001	上装饰条，喷黑油
41-356138-1001	下装饰条，喷黑油
41-616138-0001	音量钮，电镀光铬
41-666138-0003	左右装饰条 啤绿色
41-676138-0001	左碟口透光架，底部喷白
41-686138-0001	右碟口透光架，底部喷白
41-696138-0001	遥控窗盖头 喷紫色209C
41-716128-0000	LCD导光板, ACRYLIC/透明
41-726128-0001	LCD支架, ACRYLIC, 内表面喷反光白油
44-066128-0100	LCD支架, 0.4MM 铁片, 表面铜黑油
45-010036-0300	出盒弹簧 线径 $\phi 0.3$
47-016138-1012	镜片(无LOGO槽)，PMMA，银字黑底(877C)，丝印银字“-10/+10\SHUTTLE” 型号：SCD-420
48-016128-0100	散光片（表面磨砂，PC，0.1t），丝印黑边
56-194178-0063	VOL橡胶环
59-022301-2010	自攻锁紧螺丝ST2x10PAZh，黑色
69-038128-6000	AUX垫 8x8x6
69-028118-2000	遥控头垫 EVA 5*5*2mm 单面EVA
69-038118-2000	遥控头遮光EVA，7X7X3mm，内径 $\phi 4.5$ mm
90-D6138U-0301	PY-D6138U 包材 B3-2010-38C
40-056118-0000	眼镜盒 PP/BLACK(表面拉丝)
57-900505-0038	SHUTTLE标牌，0.8mmPVC，黑底拉丝银字，48.5X8.5mm
43-088118-0110	半截柜筒 0.6mm G. S. S
44-048118-0100	钥匙 1.0mm G. S. S
44-108118-0100	长巴 0.8mm G. S. S
46-020805-0400	M5.0平面垫圈 主机固定到车内时使用
46-051309-0400	SPRING WASHER M5 垫机尾螺丝和长巴螺丝(备用)
59-012103-4005	机牙大盘头平尾螺丝M4X5BZb，白色 ISO孔备用螺丝
59-012103-5005	机牙大盘头平尾螺丝M5X5BZc，五彩 ISO孔备用螺丝
59-032303-5025	自攻加硬锁紧螺丝ST5X25PAZb，白色 主机固定到车内时使用
59-065103-5003	NUT M5.0 主机固定在车内时使用
59-085403-5021	M5X21机牙双头螺杆六角螺丝
62-058118-0001	眼镜盒胶袋 250x89mm
62-058118-0004	螺丝, 垫片, 钥匙胶袋 140x85mm
62-016118-0000	发泡胶(1套)
62-058118-0002	主机胶袋 317x304mm
62-058118-0005	输出线胶袋 200*80mm

Mechanical Parts List

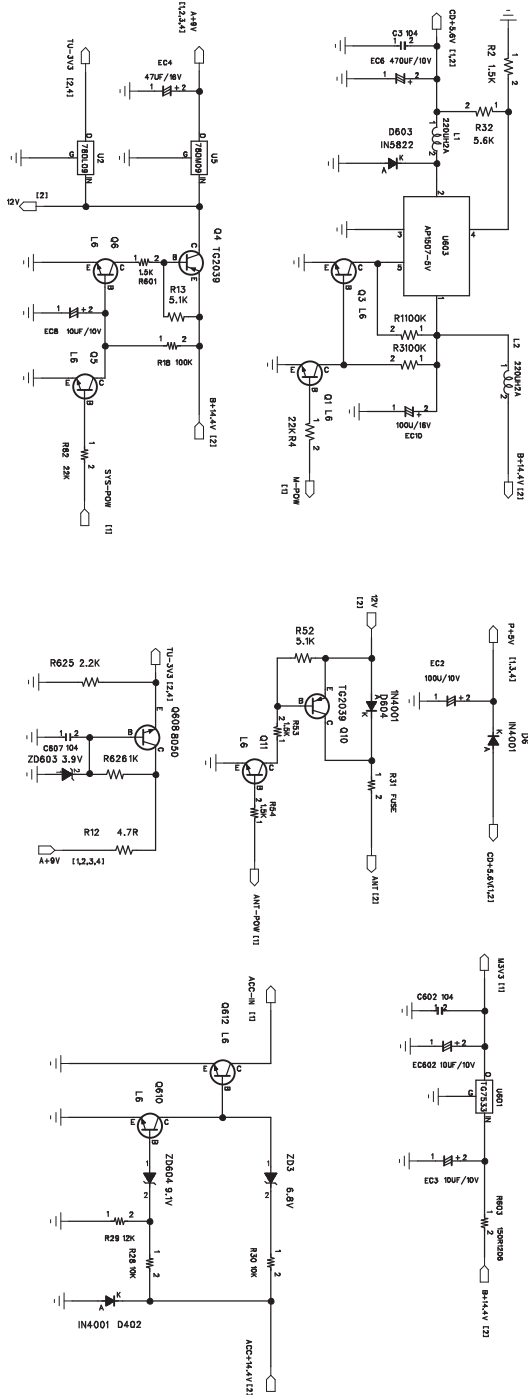
69-400100-5000	眼镜盒海绵 40X10X5MM单面背胶
69-400200-1000	眼镜盒海绵 40X20X10MM单面背胶
60-B10038-03-01	俄文说明书, 型号: SCD-420
62-058118-0006	说明书胶袋 225*165MM (带封口条)
63-018118-0901	10A FUSE LABEL WHTHE/BLK
63-018118-0903	1A FUSE LABEL WHTHE/BLK
63-048118-0401	CLASS I LABEL 黄底黑字
63-058118-0901	QC PASSED LABEL 白底黑字
63-068118-0601	ANT BLUE/BLK
63-078118-0201	ACC+ RED/BLK
63-088118-1001	GROUND 黑底白字
63-098118-0401	B+ YELLOW/BLK
63-108118-0701	REAR-R SPEAKER (+) (-) VIOLET/BLK
63-118118-0801	FRONT-R SPEAKER (+) (-) GRAY/BLK
63-128118-0501	REAR-L SPEAKER (+) (-) GREEN/BLK
63-138118-0901	FRONT-L SPEAKER (+) (-) WHT/BLK
63-148118-0902	LEFT RCA LABEL 白底黑字 (只一组RCA时用)
63-158118-0201	RIGHT RCA LABEL 红底黑字 (只一组RCA时用)
63-208118-0401	光头贴纸 YELLOW/BLK
63-228118-0401	电器危害贴纸 YELLOW/BLK
63-268118-0201	机芯螺丝封条
63-B10038-03-01	机面贴纸, 型号: SCD-420
64-B10038-01-01	保修卡
65-B10038-03-01	卡通箱 (扣底用) B=B 5pcs (470X239X295mm) 型号: SCD-420
66-B10038-03-01	彩盒 (扣底上开盖) 225x90x275MM (250g裱B9加强过哑胶局部UV) 型号: SCD-420







TDA7388



33

